



Plan No: W5999ND
Style: Log
Total Living Area: 1,449 sq. ft.
Main Flr.: 1,059 sq. ft.
2nd Flr: 390 sq. ft.
Front Porch: 160 sq. ft.
Deck: 75 sq. ft.
Bedrooms: 2
Full Bathrooms: 2
Half Bathrooms: 1
Width: 39'10"
Depth: 39'8"
Maximum Ridge Height: 23'0"
Exterior Walls: Log
Ceiling Height:
 Lower Floor: 8'
Standard Foundations: Slab, Crawl
Optional Foundations: Walkout (\$250), Basement (\$250)
Special Collections: Narrow Lot

Comfort is the key with this magnificent log home plan. Step upon the covered porch with two sets of French doors opening into the great room.

 Inside, you are greeted with a fireplace and view of a bay-shaped dining area and kitchen with bar seating.

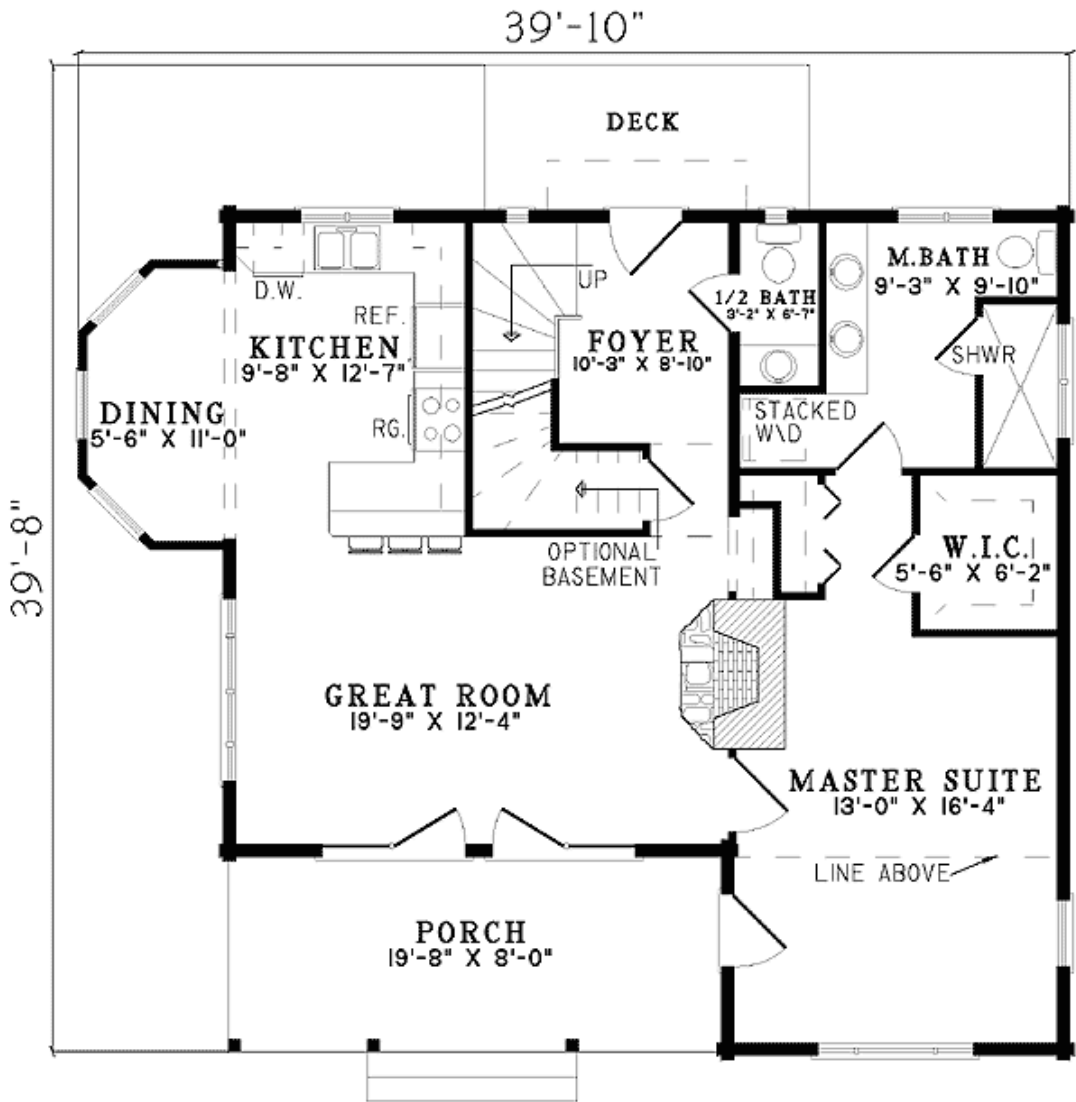
 The main level master suite includes a large walk-in closet and bathroom with an extra large shower, double vanities and stacked washer/dryer closet.

 The upper level has a bedroom and bathroom with creative ceiling heights and balcony view to the great room below.

 Ceilings: 8' standard.

 Foundation: Basement, Crawl Space, Daylight Basement. Please specify your preference when ordering.

1st Floor:



2nd Floor:

